

HARRY POTTER HOGWARTS CASTLE #71043 Advanced Version

Package contents:

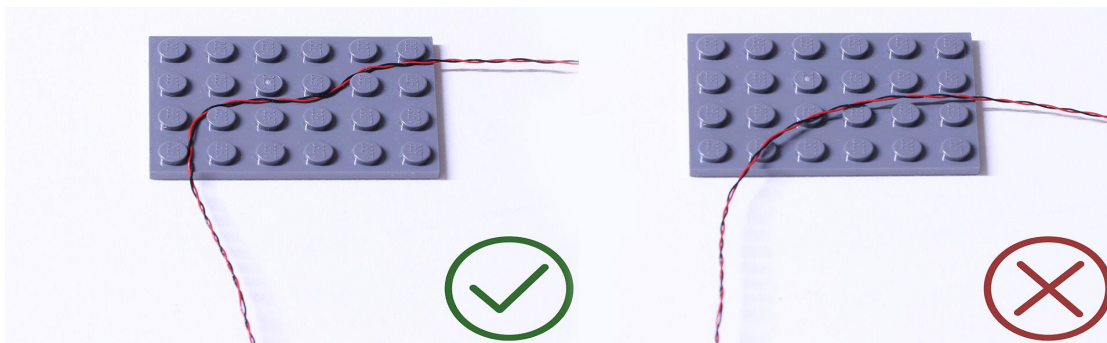
- 3 X Multi-Coloured Strip Lights
- 1 X 6-Port Expansion Boards
- 2 X 30cm Connecting Cables
- 1 X 50cm Connecting Cables
- 1 X USB Power Cables

LEGO Plate Pieces

Note:

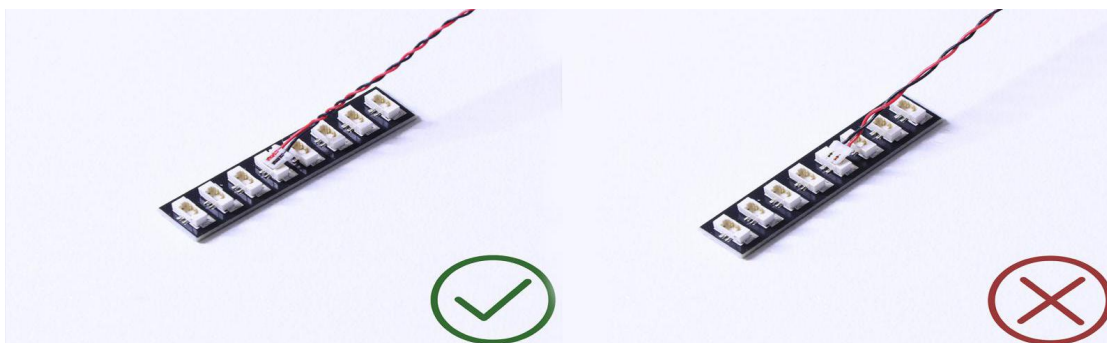
Place wires on the surface or under the LEGO building blocks.

The wire can be placed between the building blocks or under the block, but they should be placed between the studs correctly.

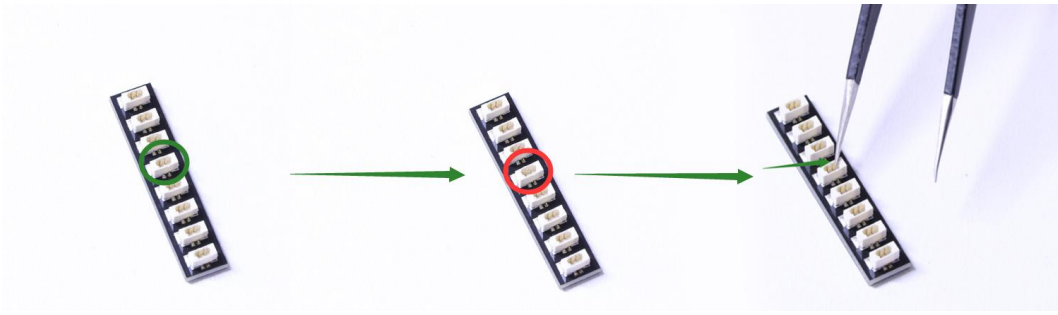


Insert the connectors to the ports.

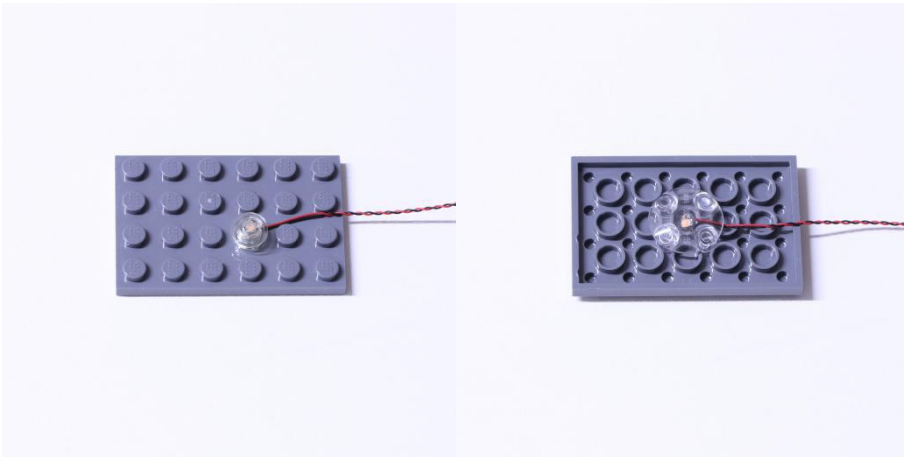
Be careful when you are operating, there's only one correct way to insert, make sure the expansion board is upward, find the soldered "=" sign on the left of the port. When you are inserting, the side which the wires can be seen should be faced to the "=" sign and if you feel hard to insert, please stop, and don't force it, for that may result in bent pins inside the port or overheating of the expansion board.



At this point, use the tweezers to straighten the bent pins.

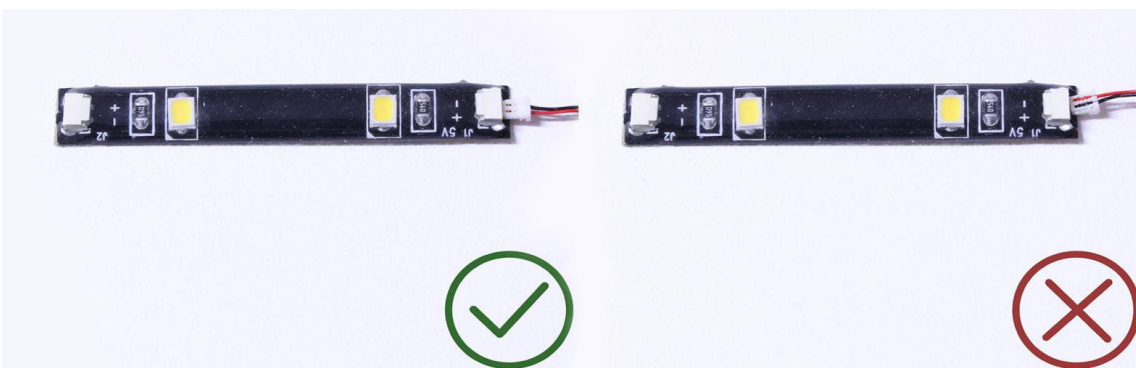


When installing dot lights, make sure they are correctly placed (Yellow LED package is exposed). You can put them either on the top of the studs or between studs.

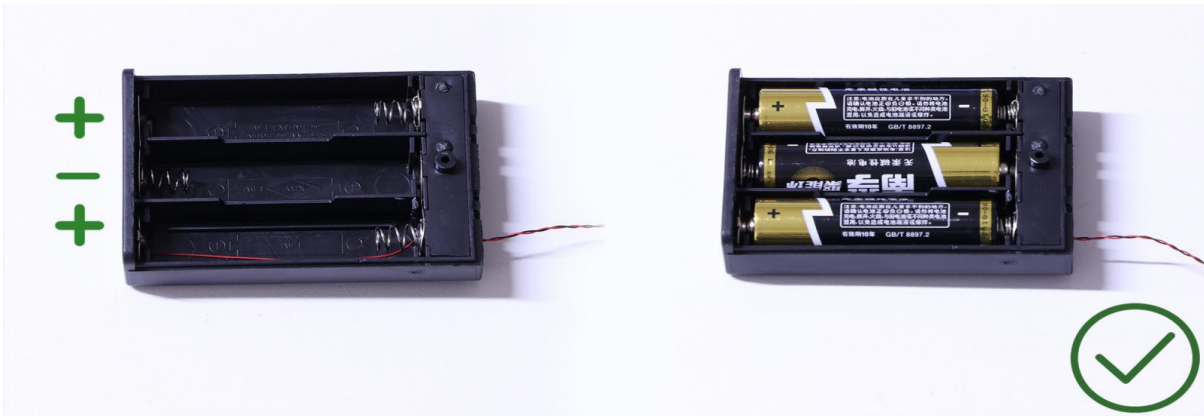


Connecting cable connectors to Strip Lights

Take extra care when inserting connectors to ports on the Strip Lights. Connectors can be inserted only one way. With the Strip Light facing up, ensure the side of the connector with the wires exposed is facing down. If a plug won't fit easily into a port connector, don't force it. Doing so will damage the plug and the connector.



Finally, please pay attention to the positive and negative terminals of the battery when installing the battery case.

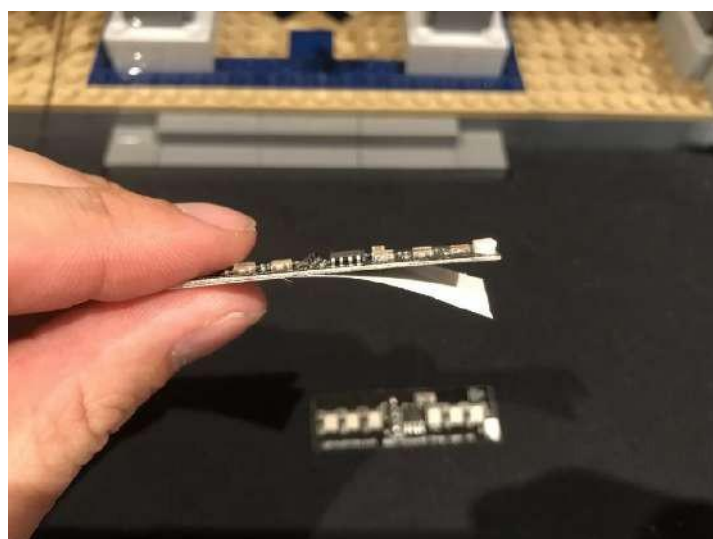
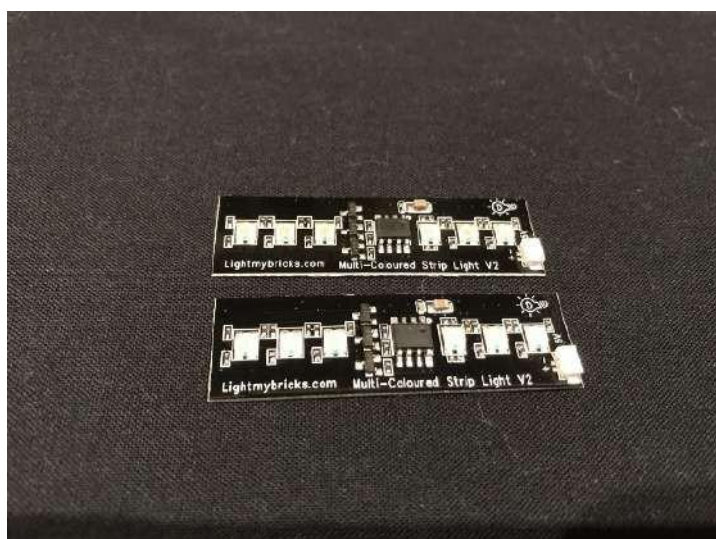


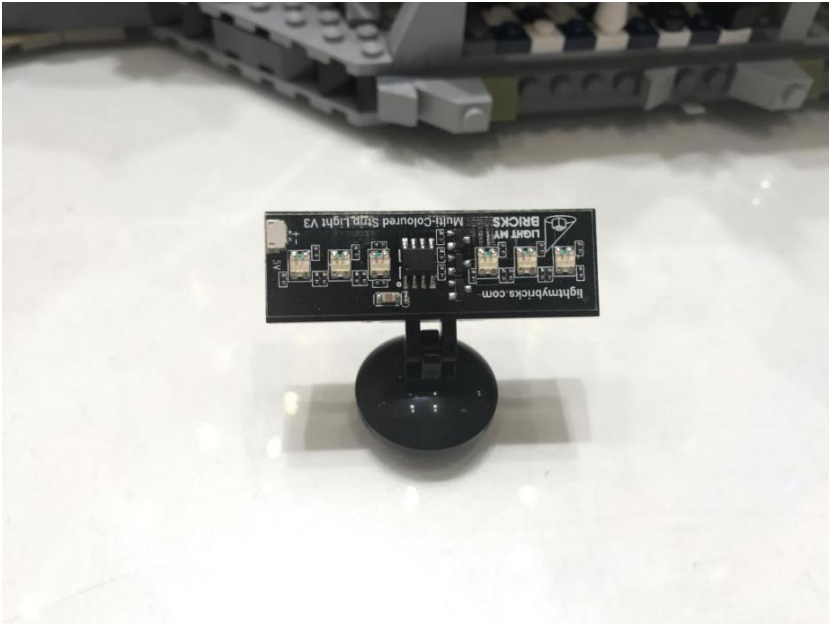
OK, Let's Begin!

Take the pieces as shown below. Connect as shown below.



Take a Multi-Coloured Strip Light, and stick it on the just installed plate.

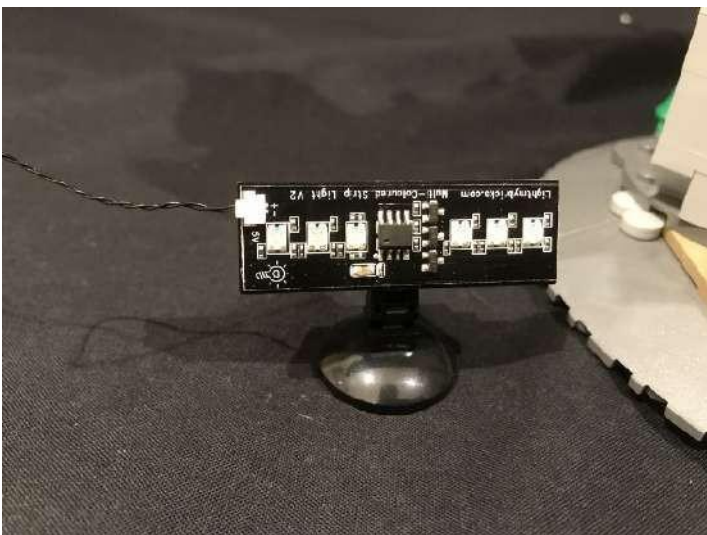




Repeat the operation and install another 2 atmosphere lights.



Connect the 50cm cable and the two 30cm cables to the input ports of the three atmosphere lights, and the other end to the 6-seat socket.



We could place the spotlights on the sides and in the middle of the castle and adjust them so that the lights illuminate the walls. The cable can be pressed under the castle and the 6-seat socket can be hidden in place with double-sided tape. Now you can connect to the USB mobile power and enjoy it . Wish you a happy time!

